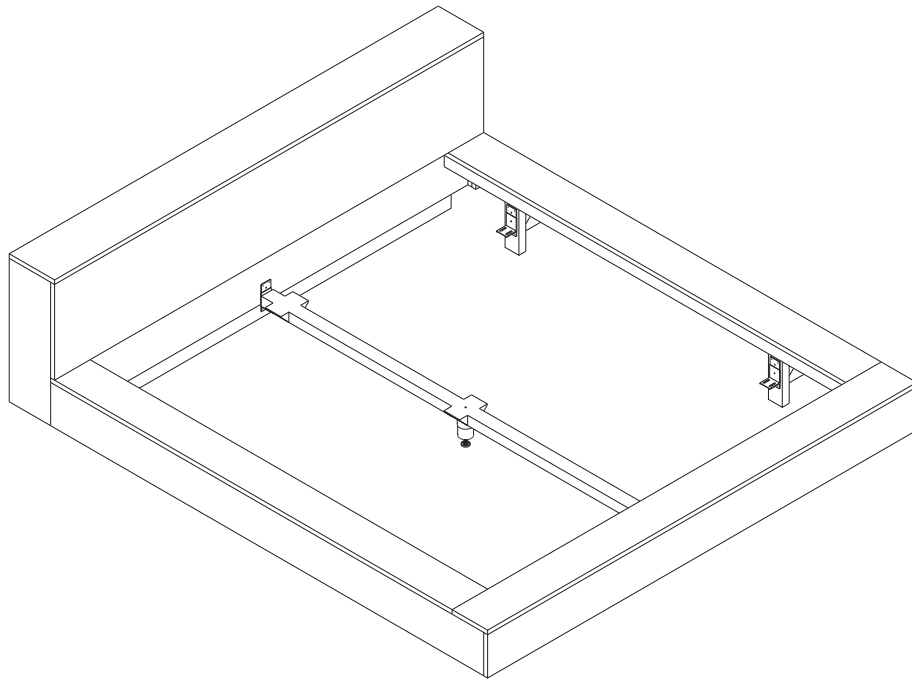


ASSEMBLY INSTRUCTIONS FOR BED INSTALLATION

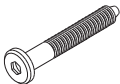


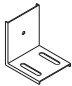
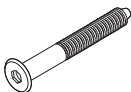
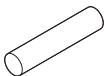


OAK MADRA BED - WITHOUT SLATS

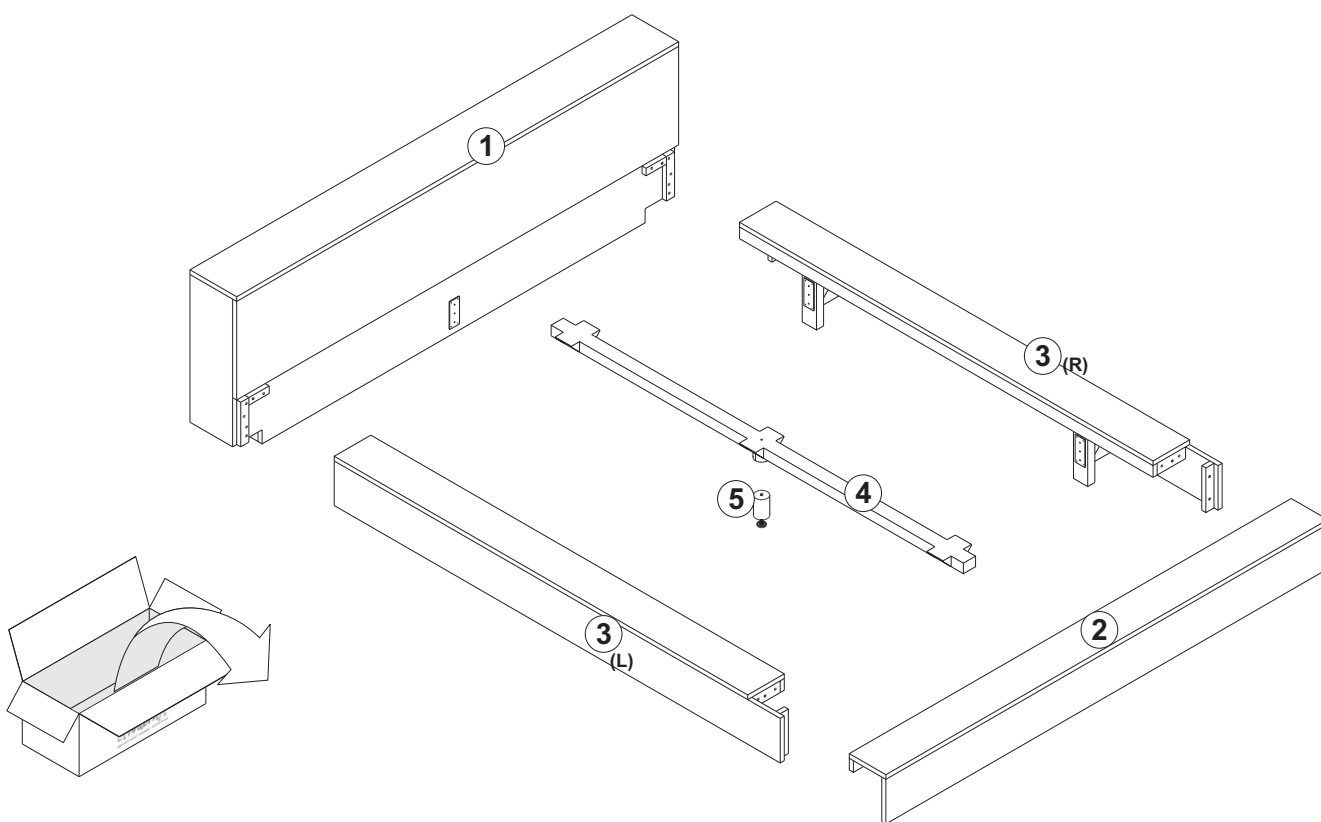
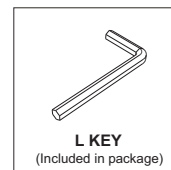
51201	OAK MADRA BED - WITHOUT SLATS 180/200/71
51202	OAK MADRA BED - WITHOUT SLATS 160/200/71

OAK MADRA BED - WITHOUT SLATS ASSEMBLY INSTRUCTION FOR BED INSTALLATION

HARDWARE ENCLOSED

 (10X) JCBC SCREW M6 X 45 mm	 (4X) JCBC SCREW M6 X 20 mm	 (6X) JCBC SCREW M6 X 6 mm	 (6X) L BRACKET
 (1X) COUNTERSUNK SCREW M6 X 50 mm	 (12X) DOWEL Ø12 X 40 mm		

TOOL



IN YOUR PACKAGE :

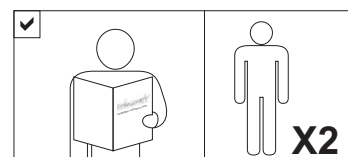
ASSEMBLY INSTRUCTION

HARDWARE (AS LISTED ABOVE)

PARTS TO BE INSTALLED

1. HEADBOARD 1pc
2. FOOTBOARD 1pc
3. SIDE RAILS 2pcs
4. MIDDLE SUPPORT 1pc
5. MIDDLE LEG 1pc

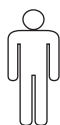
NOTICE



SYMBOLS



DIRECTION



NUMBER OF
PERSON NEEDED



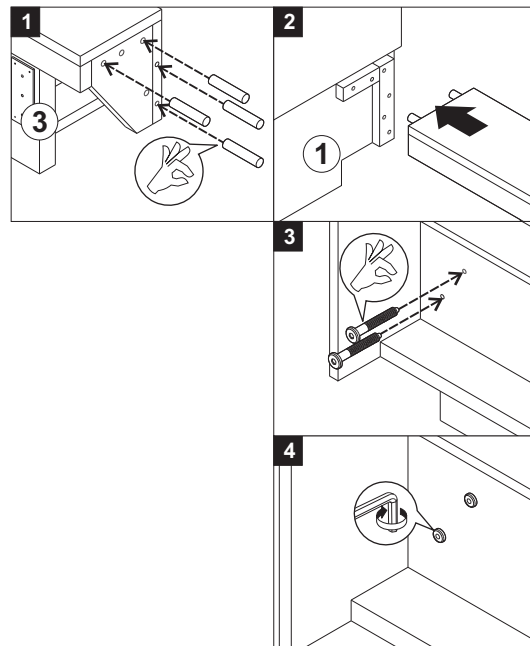
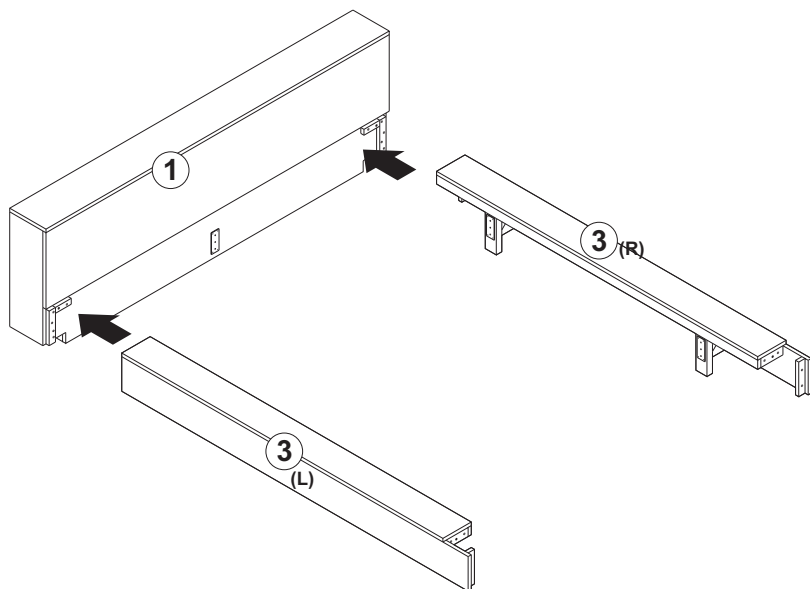
USE HAND



USE L KEY
TO TIGHTEN

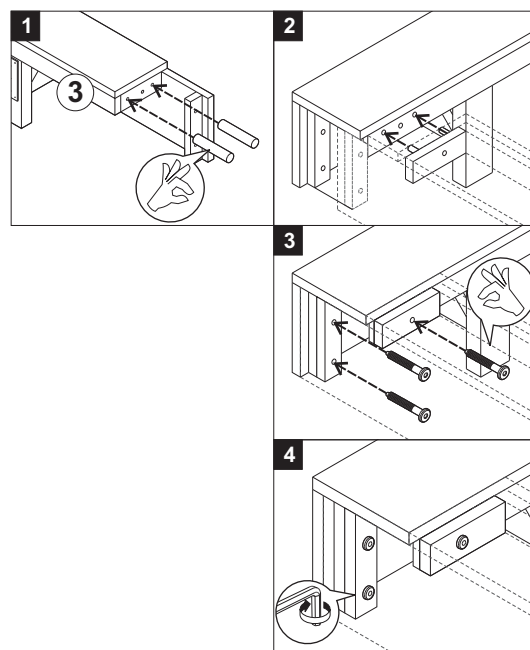
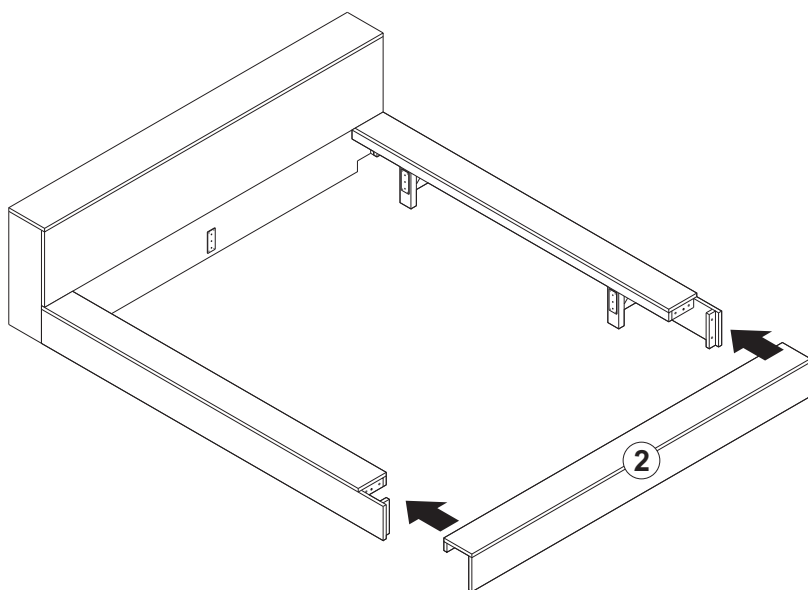
OAK MADRA BED - WITHOUT SLATS ASSEMBLY INSTRUCTION FOR BED INSTALLATION

A. INSTALLING SIDE RAILS TO HEADBOARD



- USE DOWEL Ø12x40 mm (8X)
- USE JCBC SCREW M6x45mm (4X)
- SCREW LOCATION ON THE BACK SIDE OF BEDHEAD
- DO NOT FULLY TIGHTEN

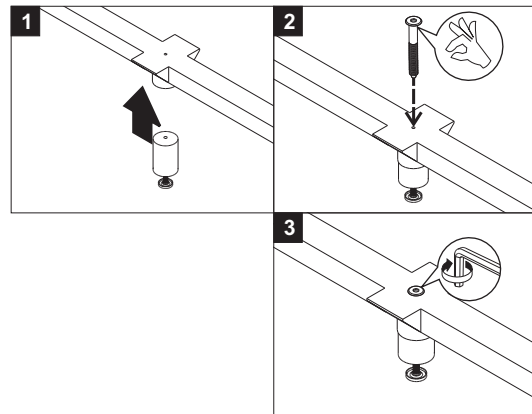
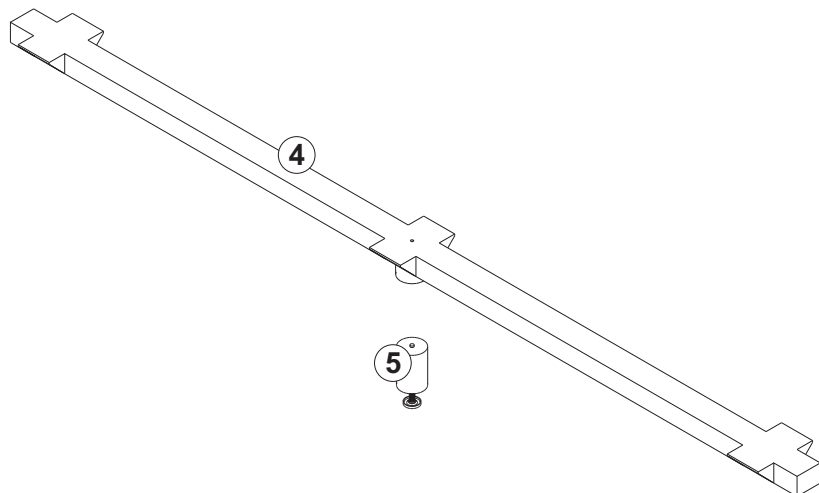
B. INSTALLING FOOTBOARD TO SIDERAILS



- USE DOWEL Ø12x40 mm (4X)
- USE JCBC SCREW M6x45mm (6X)
- DO NOT FULLY TIGHTEN

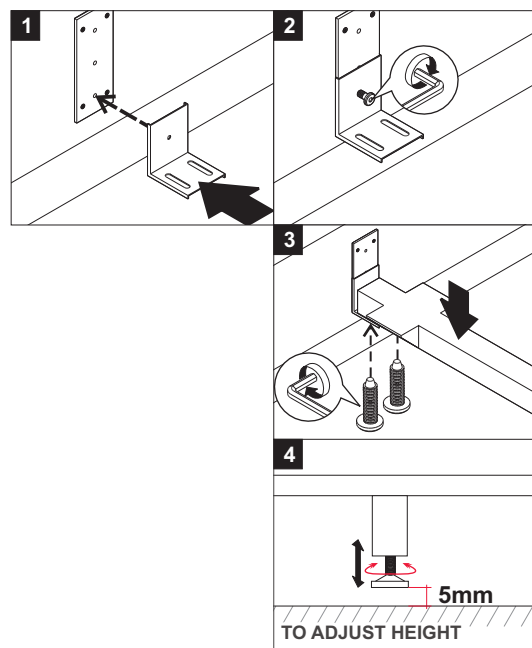
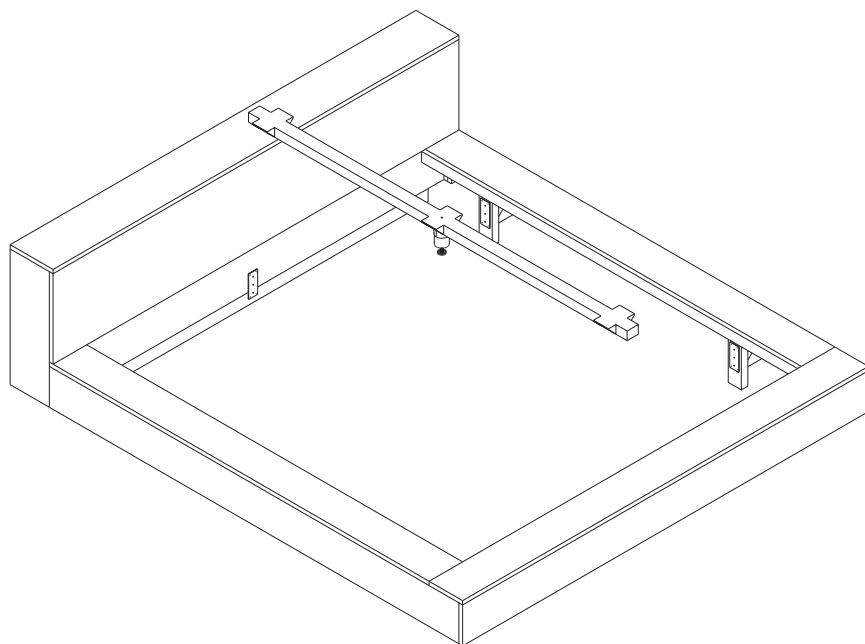
OAK MADRA BED - WITHOUT SLATS ASSEMBLY INSTRUCTION FOR BED INSTALLATION

C. INSTALLING MIDDLE LEG TO MIDDLE SUPPORT



- ⓘ - USE COUNTERSUNK SCREW M6x50mm (1X)
- TIGHTEN FULLY

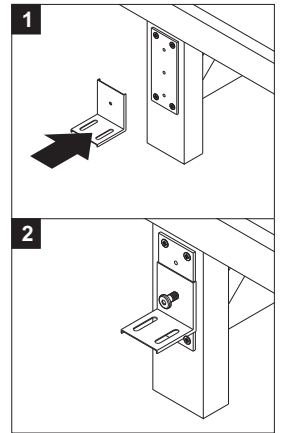
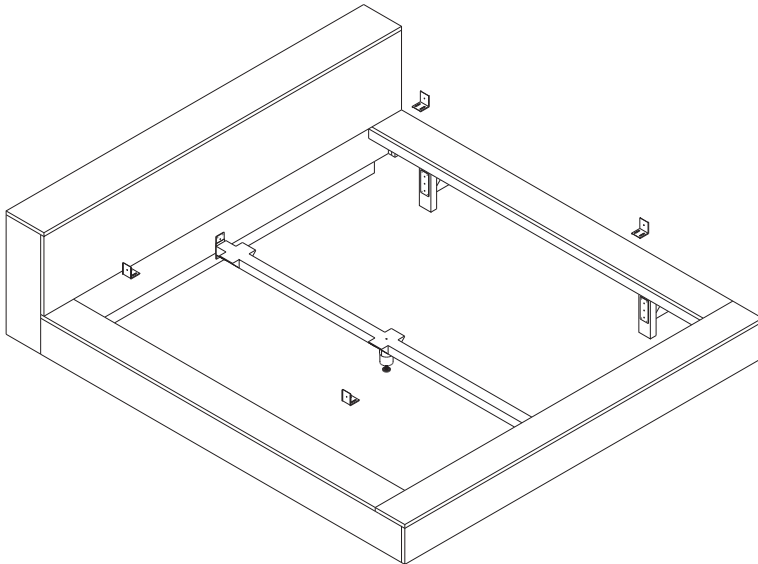
D. INSTALLING MIDDLE SUPPORT



- ⓘ - USE JCBC SCREW M6x6mm (2X)
FOR STEP 2
- USE JCBC SCREW M6x20mm (4X)
FOR STEP 3
- DO NOT FULLY TIGHTEN

OAK MADRA BED - WITHOUT SLATS ASSEMBLY INSTRUCTION FOR BED INSTALLATION

E. INSTALLING L BRACKET



- USE JCBC SCREW M6x6mm (4X)
- DO NOT FULLY TIGHTEN

F. TIGHTEN FULLY ALL SCREWS

